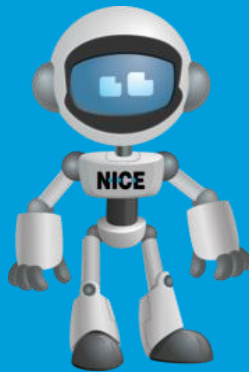


NICE POC- 5



- 5 Day onsite Proof Of Concept
- No cost to you
- Automate a single process
- Create a video showing the manual process and time saved by automation
- Build the business case based on time savings

Discovery Session



- Review the Robotic Process Automation solution and map to business operation - thoroughly interactive session.
- Explore the types of applications and technology used in areas where automation is desired.
- Determine requirements. Discuss your operations, the processes you want to automate and the goals you want to achieve.
- Identify the best process for a Proof of Concept (POC).
- Plan sequence of events.

Prerequisites

This presentation outlines the overall process and requirements for development of a POC by NICE.

Prerequisites

- Connectivity analysis
 - A session (either remote, or onsite) to test connectivity to customer target applications that are involved in the POC flow.
 - Requirements for the connectivity analysis are the same as the functional, technical requirements for a POC
- Download Software
 - NICE Real-time Solutions Software is downloaded to the designated machines.
 - Installers will be placed on NICE FTP, or any other way that will be agreed with the customer

Process

Process

- Installation
 - NICE Real-time Designer is installed on a dedicated development machine.
 - NICE Real-time Client is installed on the test machine
- Development
 - NICE Robotic Process Automation Engineer creates business logic based on the selected process
 - Solution is tested
- Presentation
 - POC presentation to the customer
- Uninstall
 - NICE software is uninstalled from development and test machines

Functional Requirements

- Access
 - To the client environment (Navigation to the screen elements involved in POC design)
 - To the systems (logons and passwords) that will be used in the project (read from or written to)
- Systems SME to provide:
 - Short applications overview, including: environment overview, navigation and flow guidance
 - Demonstrate the different ways to navigate to the screens involved in the POC
 - Accessibility for questions and support during the development
 - Test accounts that will provide examples of all required call flows/scenarios
- Documentation
 - Document describing the flow, step by step, including screen shots and functional requirement from each field in the customer application that is involved in the POC process

Technical Requirements

- Local Environment
 - Two workstations with all target applications on each machine
 - One for development and one for testing.
 - Ability to install NICE Real-time Designer, Real-time Client (Admin rights required)
 - Ability to perform and save screen captures
 - Ability to upload and download files from a FTP server
- Citrix Environment- (Usually not ideal for the POC-5 Program)
 - Access to a Citrix server with the target application installed
 - Install NICE Real-time Designer, Real-time Client on the Citrix Server
 - Publish the Designer in the same session as the target application
 - Machine with a Citrix client to access the Citrix server with the NICE Real-time Designer
 - Ability to replace files, install, change registry settings on the Citrix session
 - Ability to publish a solution for designated users only on Citrix
 - Ability to save files and transfer to local machine, get a copy

* Alternatively, analysis executables can be copied to, and run from the analysis machine